

Selected Games

IN MODERN CHESS – more than ever before – it is hard to draw the line between positional and tactical play: in grandmaster games these elements of the game are naturally combined. Therefore the divisions we have used are somewhat arbitrary: for example, a breakthrough is based on the implementation of a strategic plan, and it, in turn, relies on the tactical features of the particular position. We will merely draw the attention of the reader to some counter-argument in each game – and not more.

Breakthrough

No. 125
Kramnik–Belyavsky
Belgrade 1995
 Réti Opening

With thanks to faulty equipment

'This was the last round, and for overall victory in the tournament it was essential for me to win. For this reason I avoided the main theoretical set-ups of the Queen's Gambit, which were well known to my opponent, and chose something of a sideline. Especially since at the start of the tournament my computer had broken down, and all my opening preparation essentially came to nothing. I had to play "on spec", and I myself was surprised that with such a modest opening I was able to win, within the "official bounds" of a miniature game...' (*Kramnik*)

To this it can be added that the present game might well serve as a 'visiting-card' of the breakthrough – a very sharp weapon in Kramnik's hands.

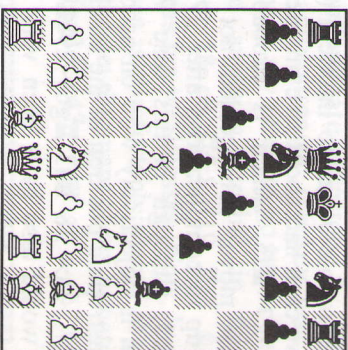
- 1 ♘f3 d5
- 2 g3 c6

- 3 ♖g2 ♖g4
- 4 0-0 ♘d7
- 5 d4 e6
- 6 ♘bd2 f5

Radically preventing a possible e2-c4, which in the event of 6... ♘g6 White would nevertheless be able to play after ♙e1. It should be said that at that time Black's last move was beginning to come into fashion.

- 7 c4 ♖d6

Keeping in reserve the possibility of developing the king's knight at either f7 (via h6), or f6.



Here I decided to begin playing more actively, in order to try and exploit my opponent's slight delay in developing his kingside. Because if Black should succeed in playing ... ♘g6 and ... 0-0, he will achieve a highly favourable version of the 'stonewall' set-up, without his light-square bishop being shut in.

- 8 ♗b3 ♗b8

The black queen must not be diverted to the defence of the g5 square, for the moment it is guarding the g5 square, to where the white knight is eager to go.

- 9 ♙e1

Hinting that e2-c4 will be highly probable after the pawn exchange in the centre. Incidentally, after 9... ♘g6 this is