

Salwe,Georg
•Rubinstein,Akiba

Lodz
 [A.J.G.]

C50
2350
2534
 26.03.1903

The position after 14.Nxd4, is
 the POTD for Tuesday;
 February 18th, 2014.
 (<http://www.chessgames.com>)

The ratings are gathered from
 the information found on the
 "Chess Metrics" website.

1.e4 e5 ; 2.Nf3 Nc6 ;
3.Bc4 Bc5 ; 4.Nc3 d6 ;
5.d3 Nf6 ; 6.0-0 ,

Thus far, all the moves have been
 perfect, and conform to the four
 basic principles that govern the
 opening phase of the game.
 (Giuoco Piano / Italian Game.)

[The move of: RR6.h3!?,
 would have prevented all of
 the problems associated with
 the pin of the Knight on f3.]

For good coverage of the lines,

X	A	B	C	D	E	F	G	H	Y
8	r	+	l	W	k	+	-	t	{
7	p	p	p	-	+	p	p	p	'
6	-	+	n	p	-	n	-	+	&
5	+	-	v	-	p	-	+	-	%
4	-	+	L	+	P	+	-	+	\$
3	+	-	N	P	+	N	+	-	#
2	P	P	P	+	-	P	P	P	"
1	R	-	v	Q	+	R	K	-	!
x	a	b	c	d	e	f	g	h	y

see MCO-15, beginning on page
 #18 ... and all columns and notes.
 [All of these moves were 'normal'
 (and also 'book') at the time that
 this game was played.]

6...Bg4 ; ("Pin ... and win!")
 Rubinstein immediately begins
 to pressure White's K-side, the
 only drawback, is that after
 h2-h3, Black may be obligated
 to swap off his LSB.

[RR6...Na5!?! - Fritz 13.]

7.Be3 , (Square control.)
 White begins to dispute the

key central squares. (d4)

.

[Perhaps a more accurate line would have been: RR7.h3 Bh5 ; 8.Bg5 h6 ; 9.Bxf6 Qxf6 ; 10.Nd5 Qd8 ; 11.c3² , with a solid plus for White, albeit a relatively small one. (ChessBase "Power-Book.")

.

GM Pavel V. Tregubov V (2515) - GM Ruslan Ponomarev; (2300?) [C50] / RUS-chT / Briansk, RUS; (R#3), 1995. (0-1 in 37 moves.)]

.

.

7...Bb6 ; (Solidity.)

Rubinstein liked "clean" Pawn structures, and perhaps did not want a set of doubled QBP's.

.

[RR7...0-0 ; - Fritz 13.]

.

.

8.Kh1!? , (Safety?)

Perhaps Salwe felt that his King would be a little more secure in the corner

.

[Probably a little better was:

RR8.h3 Be6÷ ; - Fritz 13.]

.

.

8...Qd7 ; (Jacking up?) Rubinstein brings his Queen into the foray, perhaps the main intent of this move is to discourage White from pushing his KRP forward. (Black - now - might sack on h3, and get 2 Pawns and an attack ... for the piece. Rubinstein also has played a trump card, which says: "I might castle Queen-side.")

.

[RR8...Nd4!? ; - Fritz 13.]

.

.

9.a3!? , (Saving the LSB?)

This moves does a lot of different things. For one, White might be suggesting, that if Black were to try to castle on his right, then White would respond with b2-b4 and a Pawn Storm.

.

[RR9.h3 , - Fritz 13.]

.

.

9...Nd4! ; (Pressure!)

Black slams the Knight into the outpost-square, both Fritz and Houdini agree that this is best.

10.Rb1?! , (Probably - '?')

I don't know what White thought that he was doing in this position, however, this is just too slow.

So many have focused in on other moves, this appears to be the real culprit behind White's misery, Salwe's position slowly gets worse from this point on.

[It looks like White had to play BxN/d4 here:

¹ 10.Bxd4™ Bxd4 ; 11.h3 Bxf3 ; 12.Qxf3 c6÷ ; (unclear) when Black looks OK, and may have seized the initiative. However, at least White would have not had to throw in the towel at move 14! (As he did in this game.)]

10...h5!? ; (Interesting.)
Rubinstein - perhaps sensing

his opponent's distress in this particular position - begins to probe White's K-side.

[Fritz 13 gives the following line of analysis here: (>/=) RR10...Bxf3 ; 11.gxf3 Qh3 ; 12.Bxd4 Bxd4 ; 13.Rg1 0-0 ; 14.Rg3 Qh4 ; 15.Qf1 g6 ; 16.Ne2 Bb6 ; 17.Kg1 c6³ ; when Black is solidly better, however, there is no forced win in sight.]

Now White, in order to ease the pressure on his center and K-side, must swap on d4.

11.Bxd4! , (Best/forced.)
All the engines agree that White had to play this move.

Now one might think that Salwe was going to try and make a game of it, he seems to be back on the right track.

[< 11.Na2 Bxf3 ; 12.gxf3 Qh3-+ ;
(Black has the threat of ...♝g4; just as he did in the game.)]

.
11...Bxd4 ; (Total dominance.)

Black has the much better game here, no matter what you might think ... or what the engines say.

```

XABCDEFGHIY
8r + - + k + - t (
7p p p q + p p - '
6- + - p - n - + &
5+ - + - p - + p %
4- + Lv P + l + $
3P - NP + N + - #
2- PP + - PPP"
1+ R + Q + R + K! [
x a b c d e f g h y
    
```

.
 Black can improve his position with moves like ...c7-c6; and then castle on the Queenside. Then Black has the idea of trying to open the h-file with ...P/h5-h4-h3.

.
12.Ne2? , (Ugly!)

White already had a difficult game, and Salwe was probably a good enough player to

readily grasp this.

.
 Most lower-rated players ... or players who have never played a single tournament game ...

do not realize, that sometimes you will make your position worse while trying to wiggle out of a bad position.

.
 The net result of White's Ne2? is that his Bishop-Pawns get doubled on the King-side, and his position is much degraded as the overall result.

.
 [Fritz 13 offers two possible improvements for White:
 RR12.Kg1 ,h4, 13.h3.]
 [RR12.Nd5 , (paring down)]

.
 Rubinstein - of course - does not hesitate to double Salwe's Pawns near his King.

12...Bxf3 ; (!) **13.gxf3 Qh3** ;

The engines already show that Black has the much better game. (With correct play, saving White's awful position may not even be possible. In such positions,

players will often drop their guard and blunder.)

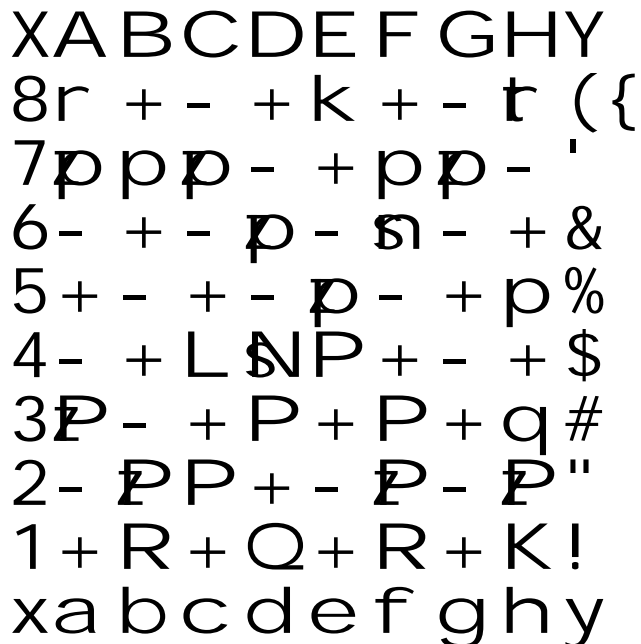


Study this position carefully. After just a few minutes of careful reflection, it becomes obvious that White is in a lot of hot water here.

14.Nxd4? , (Ooops!!!)
 White was expecting Black to (automatically) recapture on d4, when then he will have time to defend by playing the simple play of R/f1-g1.

[White had to play: 1 14.Ng1™ ,

but after Black plays: Qh4μ ;
 Black is much better here.
 (And probably winning.)]



This position was the POTD on Tuesday; February 18th, 2014.

I should remark that I have seen many players make this type of mistake. You become so fully conditioned to your opponent's recapture during an exchange, that you will not stop and look for an "in-between move."
 (A Zwischenzug.)

Now Rubinstein plays an utterly

brilliant and unexpected shot.
14...Ng4!! ; White resigns. (0-1)
 (After f3xg4, Black opens
 the h-file, and mate is
 not far off.)

[The mighty Fritz shows that
 White can delay mate, however,
 he cannot prevent it. Viz:
 14...Ng4!! ; 15.f3xg4 h3xg4 ;
 16.Bxf7+ Kxf7 ; 17.Nf3 gxf3 ;
 18.Qxf3+ Qxf3+ ; 19.Kg1 Qg4+ ;
 20.Kh1 Rxf2+! ; 21.Kxf2 Rh8#

(This analysis line is actually
 longer than the real substance
 of the game!)

(Diagram)

A very nice miniature by the
 great Akiba Rubinstein.

Copyright (c) A.J. Goldsby, 2014.
 All rights reserved.

0-1

